

# Product Listing June 2021



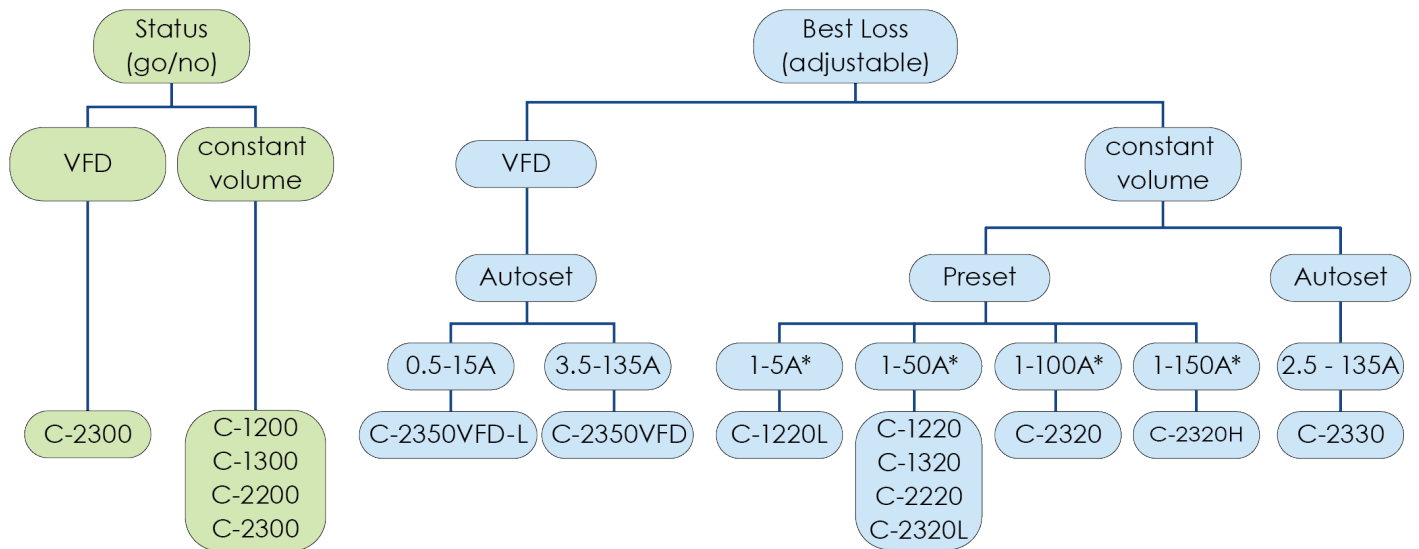
# Current sensors - Digital output

We stock a wide range of current sensors from our very small C12xx range through to our larger C23xx range all sizes come in adjustable and non-adjustable in both relay output and analogue output. Please select from the range shown. The Senva selection guide shown below and over the page may help you decide your needs.

## SEVA DIGITAL CURRENT SENSOR SELECTION GUIDE\*\*

C-12XX = mini solid core  
 C-13XX = solid core  
 C-22XX = mini split core  
 C-23XX = split core

\*\* read sensor spec sheet/install guide to ensure compatibility with each application  
 \* Preset amperage ranges are approximated; see datasheet for specific ranges of each current sensor to ensure compatibility



SEVA MODEL	DESCRIPTION
C1200	on/off 0.25 to 50A range 1A@30VAC/DC N.O.
C1200HV 240V	on/off 0.25 to 50A range 1A@250VAC N.O.
C1220	adjustable set point 0.75 to 50A range 1A@30VAC/DC N.O.
C1220L	adjustable set point 0.75 to 5A range 1A@30VAC/DC N.O.



SEVA MODEL	DESCRIPTION
C1300	on/off 0.25 to 50A range 1A@30VAC/DC N.O.
C1320	adjustable set point 0.75 to 50A range 1A@30VAC/DC N.O.



SEVA MODEL	DESCRIPTION
C2200	mini split core on/off 0.35 to 50A range 1A@30VAC/DC N.O.
C2220	adjustable set point mini split core 0.25 to 50A range 1A@30VAC/DC N.O.
C2220L	adjustable set point mini split core 0.25 to 5A range 1A@30VAC/DC N.O.



## Digital current sensors ... continued

SENA MODEL	DESCRIPTION
C2300	on/off 0.5 to 100A range 1A@30VAC/DC N.O.
C2320	adjustable set point 1.25 to 100A range 1A@30VAC/DC N.O.
C2320L	adjustable set point 1.25 to 50A range 1A@30VAC/DC N.O.
C2320L-EMC	adjustable set point 1.25 to 50A range 1A@30VAC/DC N.O. VSD
C2320H	adjustable set point 1.25 to 150A range 1A@30VAC/DC N.O.
C2330	autoset, 2.5 to 135A range 1A@30VAC/DC N.O.
C2350VSD	auto calibrating, 3.5 to 135A, 1A@30VAC/DC N.O.
C2350 VSD-L	auto calibrating, 0.5 to 15A, 1A@30VAC/DC N.O.

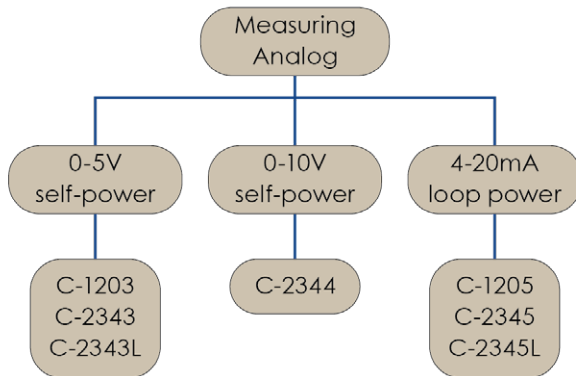


SENA MODEL	DESCRIPTION
C1500-06	monitor 6 loads from one unit, 6 separate outputs 0.1 to 50A 1A@30VAC/DC N.O.
C1550	monitor up to 18 equally sized motors with just 2 CT, s1 output, 0.1 to 50A 1A@30VAC/DC N.O.



Our special range of multi point monitoring current sensors are an economical way of monitoring several loads from one neat unit, the C1500-6 is designed to monitor 6 different sized loads where the C1550 can monitor a number of loads of the same size such as several motors used in an air curtain.

## Current sensors - Analogue output



### SENA ANALOGUE CURRENT SENSOR SELECTION GUIDE\*\*

C-12XX = mini solid core  
 C-23XX = split core

\*\* read sensor spec sheet/install guide to ensure compatibility with each application

SENA MODEL	DESCRIPTION
C1203	analogue 0-15A fixed range 0-5VDC
C1205	analogue 0-15 A fixed range 4-20mA
C2343	analogue (30,60,120A) selectable range 0-5VDC
C2343 L	analogue (5A, 10A, 20A) selectable range 0-5VDC
C2344	analogue (30,60,120A) selectable range 0-10VDC
C2345	analogue loop powered 30A-60A-120A ranges 4-20mA output
C2345L	analogue loop powered 5A-10A-20A ranges 4-20mA output



## Pressure Sensors

SEVA MODEL	DESCRIPTION (DRY PRESSURE SENSOR)	
P4-1250-BB1XP	value pressure, 0-1250pa, 0-10vdc out, duct probe	no display
P4-1250-BB1LP		LCD
P5-1250-1XP	universal pressure, 0-1250pa, 0-10vdc out, duct probe	no display
P5-1250-1LP		LCD

Note: pressures are available up to 6250Pa.



SEVA MODEL	DESCRIPTION
PG-(x)SB	gauge sensor 0-5VDC state range 15,50,75,100,300,500 PSID
PG-(x)SC	gauge sensor 4-20mA state range 15,50,75,100,300,500 PSID



These small liquid sensing pressure sensors are suitable for a variety of mediums.

SEVA MODEL	DESCRIPTION
P6-0500-1-L-X	universal pressure, 1250Pa 10vdc out, no LCD
P6-0500-1-L-P	universal pressure, 1250Pa 10vdc out, LCD
More pressure ranges available, please call.	
RP-6	Duct probe kit for P6 series



MODEL	DESCRIPTION
BECK930 80-BP	differential pressure switch with tube kit:



## Water Sensor

SEVA MODEL	DESCRIPTION
WD 1	water detector, solid state isolated relay output 100mA 30VAC/DC, power supply 9-30 VAC/DC

A detector specifically designed to be mounted on a surface where water may be present such as a computer server room floor or an air conditioner overflow tray.



## Wall Mount Sensors

SENVA MODEL	DESCRIPTION
CT1R-A-3-D	wall mount CO2 digital display temp bead option
CT1R-A-3-X	wall mount CO2 NO display temp bead option
HT1R-2-A-U-D	wall mount humidity/temperature digital display
HT1R-2-A-U-X	wall mount humidity/temperature NOI display
TGOR-C-B	wall mount carbon monoxide sensor + alarm
TGOR-3-B	wall mount R134A sensor + alarm
TGOR-4-B	wall mount R410A sensor + alarm
TOR-XAA	wall mount temperature bead sensor
TOR-XBA	wall mount temperature bead sensor with over ride
TOR-XBX	wall mount temperature bead sensor + over ride and adj slider
VT0R-B-A	wall mount TVOC temperature bead option
AQ2-XXX	wall mount 7 in 1 CO2, RH, VOC, PMx, temp, light, PIR, AO or BACnet

Senva's new volatile organic compound sensors (VOC) cater to new regulations that have been introduced into USA and now in Australia. VOC can be found in a number of harmful and other gases, odours and smoke. Examples of these are paints, glues, furnishings, alcohol, cleaners, rotting food, flatulence etc.

The output of this product has been converted from a raw ethanol concentration into an intensity value, ranging from 0-500. An environment with normal air quality will typically read about 100 on this scale. New wall mount VOC is shown in the table.

## All-in-1 indoor air quality sensors.

The newly designed Senva AQ2 series is the most attractive wall mount sensor in the industry with colour OLED and capacitive touch buttons. Versatile and highly accurate these sensors are available in both analogue and BACnet/MODbus versions with options to allow configuration for any project.

Some of the options are listed below, please contact us to help you choose the right one for your application.

Carbon dioxide (CO2)	PM	VOC	RH
Temperature	slide adjuster	override push button	
BACNet/MODbus	NTC temperature bead	PIR	
OLED display	air quality ring	analogue output	



- NOTE: duct mount versions available on request



- Coming soon, PM.2.5



## Environment Sensors

The AQW series design allows customization for a sensor that meets project requirements for monitoring temperature, CO2 and relative humidity. The sensor can be ordered as: stand alone temperature; CO2/Temp; RH/Temp; or all-in-one CO2/RH/Temp with a 0-5/10V analogue or BACnet RS485 output. Lower material costs and installation time by combining multiple sensors into a single sensor housing with standard LCD and optional add-on features. Duct mount versions also available.

To order simply use model number SEN AQW- then add the options you wish for instance SEN-AQW-CO2-RH, would be a combined CO2/humidity sensor with LCD display and analogue outputs. For BAS systems you can also add an override push button and a slider adjustment with a thermistor.

MODEL	DESCRIPTION	
SEN AQW	BASE MODEL temperature with digital display	
options	BAC	BACnet added to SEN AQW
	CO2	CO2 sensor add to SEN AQW
	RH	2% humidity element add to SEN AQW
	SL	thermistor added to SEN AQW
	RTD	set point slider added to SEN AQW
	OPB	push button added to SEN AQW



With the AQW sensor you can mix and match humidity, CO2 and temperature for the exact wall mount sensor you need



## Outside air/harsh environment humidity, CO2, humidity and temperature

The Senva harsh environment series offer you a range of both analogue and BACnet robust housing options that provide you with protection from rain, overhead watering systems and harmful UV. The sensors can be ordered with any combination of CO2/RH,Temp and now have the option of dual channel CO2 element for superior accuracy.

SENVA MODEL	DESCRIPTION
HT10-2AUD	Humidity sensor Outside use, display
HT1D-2AUD	Humidity sensor duct mount, display
HT0R-2B	Humidity sensor wall mount, can add brand name
AQO-ABBA	humidity,CO2 outdoor use
AQO-BBBB	BACnet, Humidity, CO2, outdoor use
AQO-ADBA	humidity, dual CO2, green house use,



1. The wallmount comes in a number of neutral shades. Please see our full catalogue for more details.

SEN HT0R-2B



# Carbon Monoxide Sensor/Controller

For several years now we have been selling Senva's high quality, carbon monoxide sensor/controllers. It is an exceptionally versatile car park CO controller to use stand-alone or linked with others for larger systems.

SENVA MODEL	DESCRIPTION
TGW-AC	wall mount CO sensor/controller (car park emission sensing)
TGW-AN	wall mount NO2 sensor/controller (car park emission sensing)
TGW-ACN	wall mount CO/NO2 sensor/controller (car park emission sensing)
TGW-BC	BACnet/MODbus wall mount CO sensor/controller
TGW-BN	BACnet/MODbus wall mount NO2 sensor/controller
TGW-BCN	BACnet/MODbus wall mount CO/NO2 sensor/controller
TGM-AC	wall mount CO sensor/controller (car park emission sensing): metal casing

Duct mount version available - please contact us for details.

Our carpark CO sensor/controllers comply with the latest Australian standards and can control a VSD or a fan contactor directly without any other controls.

Built into each Senva Carbon Monoxide Sensor/controller:

- fan run relay output triggering at set point
- fan relay delay-off timer for fan run-on
- internal visual and audible alarm on internal fault or high PPM reading
- alarm relay output triggers on any fault or high PPM reading
- fan relay/alarm relay default position is normally closed as fail safe
- analogue output 0 to 10VDC and 4 to 20mA, scaled to current PPM reading
- in-built digital display showing PPM
- three LED status indications

While the TGW is very versatile, sometimes there is a call for more switching or external overrides such as interlocking with the fire control panel. For this reason, our car park control panels are proving popular. Each panel can have one or more of our TGW units directly attached with options for FIP control, auto/manual operation, jet fan control, additional DOL motor control, and additional visual and audible alarms.

It is also possible to customise the panels to add control of additional equipment to suit your site specifications. Please speak to us to get a quote for customised panels that can be delivered complete or as professional design drawings if you are wanting to build the panel yourself.



TGW-AC The carbon monoxide sensor/controller - a complete car park solution in a compact unit.



TGM-AC The wall mount CO sensor/controller (car park emission sensing) in metal casing

## Car Park Solutions

Our carbon monoxide controllers have been so popular for car parks that we have added a choice of newly developed, Australian made, command modules to our range. These units are designed to provide you with all the interfacing you need for a multi-unit system that is up to date with the latest AS 1668 standards.

Simply connect a VSD, CO controllers and fire panel interlocks directly to one of our ABC FC4's and a 24V power supply and you are ready to go. These save hours of labour on designing/building control panels. They are available with 16mm AOM switch and run/fail lamps built in for fast installation into a modular control board or ready for external AOM and lamps to build into a larger MSSB.

MODEL	DESCRIPTION
FC4A	CO command module for VSD, FIP, AOM interlocks
FC4B	CO command module for VSD, FIP, AOM interlocks inc switch/lamps



## Fast fit car park installations

If you just want to bolt a complete system to the wall, here it is! We have combined our ABC FC4B with a power supply and circuit breakers in one cabinet. You can purchase them as a control unit only when power to the VSD is direct from a switch board (great for retrofit applications) or with three-phase circuit breakers included.

For a starting price of \$949, a complete control board will be assembled and shipped together with wiring diagrams and operational instructions to fit your purpose. Please call AB Controls for technical advice on putting it all together.

In addition, we now offer a two compartment panel to segregate power and control and have added an IP65 version.



## Toxic Gas Sensors

We now have a new and wide range of Senva toxic gas controllers, these controllers come in both analogue and BACnet versions. The analogue includes two programmable relay outputs and two programmable analogue outputs as well as internal audible alarm. Choose a 'nema 4' wall mount, a 'nema 4' duct mount or a metal housing, with the option of adding a temperature output.

You can choose to have any two of the below sensor element options in each controller:

- ➔ Environment Sensors:
 

Carbon monoxide (CO)	Nitrogen dioxide (NO <sub>2</sub> )	Methane (CH <sub>4</sub> )
Propane (C <sub>3</sub> H <sub>8</sub> )	Hydrogen (H)	Oxygen (O)
Hydrogen Sulfide (H <sub>2</sub> S)	Carbon dioxide (CO <sub>2</sub> )	
- ➔ Refrigerant sensors:
 

Ammonia	R22	R134A (multigas)	R410	R404A	R407C
---------	-----	------------------	------	-------	-------



Talk to us about the version that's right for you.

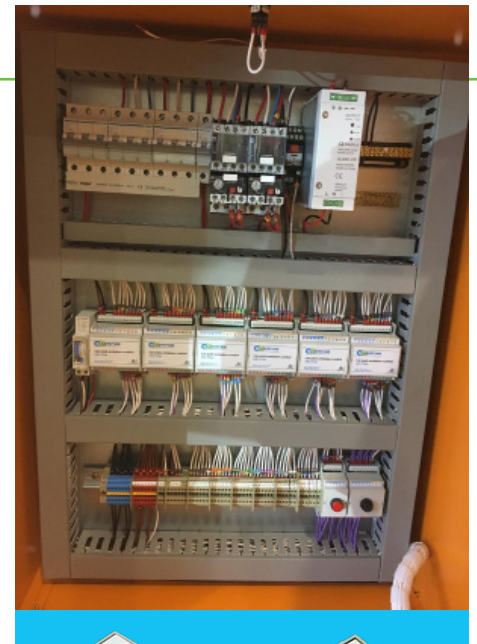


# Custom Control Panels

We have an increasing range of din mount control modules that we use in our fast-fit systems and mechanical services switchboards. They are designed to be an easy to install option that will save you from the many hours it can take to wire-up these repetitive functions.

The full range is listed below so that you can use them to make installation savings in any electrical control panel you design.

ABC MODEL	DESCRIPTION (DIN MOUNT CONTROLS, SWITCHES, LAMPS)
SW 2 -A	2 mod 6 input alarm control
SW 3 -A	3 mod 12 input alarm control
SW 2 - C	adjustable trip point current sensor Max 10 amp
SW 2 -GFA	2 mod GFA relay output
SW 2(3) -H	2 mod (3 mod) high signal select
SW 2 - J	jet fan control
SW 2 -L	2 mod lamp test 10 output
SW 3 -L	3 mod lamp test 16 output
SW 2 -SL2	2 mod off/on + green lamp
SW 3-SL2 (Y)	3 mod off/on + Red/green lamps ('L' or 'Y' format)
SW 2-SL3	2 mod AOM + green lamp
SW 3 -SL3 (Y)	3 mod AOM + Red/green lamps ('L' or 'Y' format)
SW3-GM-A	gas meter room fan control for external switching and lamps
SW3-GM-B (Y)	gas meter room fan control with built in On/test switch and run/fail lamps ('L' or 'Y' format)
SW3-SW-A	transformer room fan control for external switching and lamps
SW3-SW-B (Y)	transformer room fan control with built in Auto/On and run/fail lamps ('L' or 'Y' format)
FFC-R1-GM1-V1	Gas meter kit inc 1 ph 200watt motor control centre, Auto/test control run/fail lamps, alarm silence button, air pressure switch, audible + visual alarms
FFC-R1-T1-V1	tranformer room kit inc 1 ph 200 watt motor control centre, AOM control, run/fail lamps, two temperature sensors, Audible + Visual alarms
SW4-SP-A	4 mod stair pressure VSD controller for external switching and lamps
SW4-SP-B (Y)	4 mod stair pressure VSD controller with built in Auto/on and run/fail lamps ('L' or 'Y' format)
SW4-GV4A	Kitchen supply and exhaust fan controller with GFA interface
SW4-GV4B	Kitchen supply and exhaust fan & gas valve controller with GFA interface
FC4A	CO command module for VSD, FIP, AOM interlocks
FC4B	CO command module for VSD, FIP, AOM interlocks inc switch/ lamps
FC4BY	CO command module for VSD, FIP, AOM interlocks inc switch/ lamps
FFC-SP1	Stair VSD fan control centre kit inc Phase fail output, AOM run/ fail lamps, 2 pressure sensors, provision for FIP interlock
FFC1-1CO	car park kit for one VSD fan and one CO controller, phase fail output, 2hr time clock, AOM, run/fail lamps mant other versions available, just ask



SW2-A

SW2-L



SW2-J



SW3-SL3, SW3-L, SW3-A



SW3-SL3

SW3-SL3Y



FC4A



FC4-BY

# Fan Controllers

## ABC Sensor/Relay units - ABC FR series

The ABC-FR is an Australian designed and made product used to monitor a 240VAC fan such as a range hood or lighting circuit such as toilet lights (non contact) and bring on another fan or operate a drive open/drive closed damper for air flow. When current is detected the ABC FR unit will turn on the on-board relay, when the circuit being monitored is turned off a built-in, adjustable, run-on timer will keep the output relay energized for up to 10 min. The output relay can be used to control up to 8 Amps at 240VAC.

We have developed the range of FR units to offer standard customisable functions in an easy-to-order format. We are listing the most popular models below. If you need something a little different, just give us a call and we can work through it with you.



## ABC FR series fan controllers

ABC MODEL	DESCRIPTION	COMMON USE
FR-C10	Delay off timer and high sensitivity adjustable CT	becoming a popular version this year, great for monitoring low wattage toilet/bathroom LED lighting
FR-C0A	lead/socket for quick installation and 0.2 Amp CT	favourite for range hood booster fan control
FR-C1A (FR3A)	Delay off timer, lead/socket & .2Amp CT	perfect for toilet fan control with fast installation and run on timer
FR-C2A	1 min Del on, 10 min del off timer, lead/socket & .2amp CT	when a delay on and a delay off timer is specified this is the one you need.

- ➔ All models come with adjustable current sensor
- ➔ All above controllers can have additional external current sensors and remote switching added. So you can monitor more than one circuit such as bathroom light circuit and dryer power circuit and still add a bypass switch.

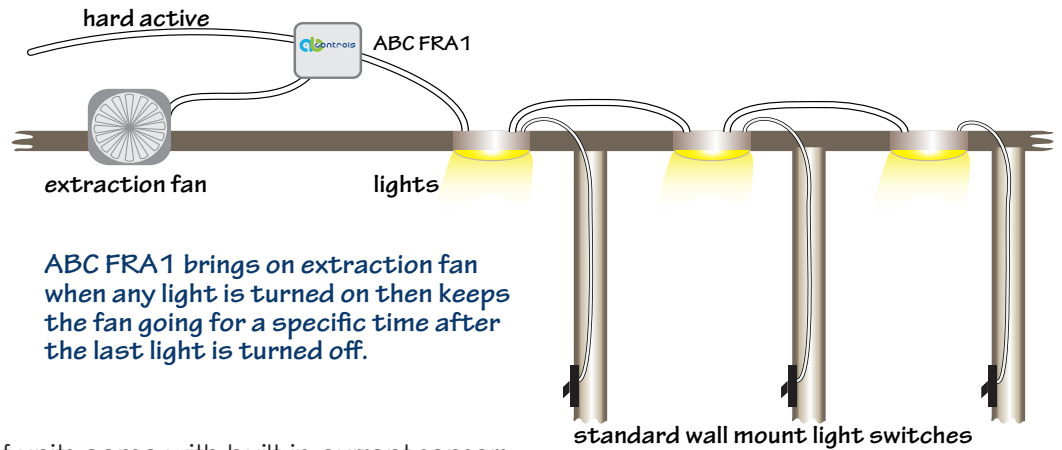
This range has a few extra features such as the delay/delay-off card; the pre-programmed control card coming soon; and the extra cabling options.



FR-C1C

Pricing of adjustable current sensor version has been reduced to same price as the non-adjustable.

## Example of use:



**ABC FRA1 brings on extraction fan when any light is turned on then keeps the fan going for a specific time after the last light is turned off.**

This comprehensive range of units come with built-in current sensors and run on timers have been designed with ease of installation firmly in mind. They can be used in many different ways to monitor the power used on one circuit such as a toilet light, range hood or air conditioner and switch a separate circuit such as a fan or air damper. It has found many uses in apartments to control fresh air fans for toilet/bath rooms and make-up air fans for kitchen range hoods. See our catalogue or call us for more information.

## Gas Valve safety

### Units for gas valve safety legislation

With the introduction of new laws for interlocking kitchen range hoods to gas valves we have proactively tested and added three adjustable controllers to our extensive list for smaller enclosed kitchens. This unit monitors a range hood, providing the range hood is running a solenoid controlled gas valve will operate. Ask about our large commercial kitchen versions currently under development.



ABC MODEL	DESCRIPTION
GV1	Gas valve interlock, adjustable C1220 sensor, 240VAC 10 amp (Res) output relay (no timer), 3 cable glands.
GV2	Gas valve interlock, adjustable C1220 sensor, 240VAC 10 amp (Res) output relay (no timer), plug/lead + socket, gland for valve cable entry.
GV3	Commercial kitchen and school gas valve controller with safety interlocks. Din rail mount for installation



## DIN mount current sensor/timers.

For years now we have been manufacturing our FR series of current sensor/del of timers used to monitor facility lights and range hood fans and control extraction or booster fans. Now we have added DIN mount versions so they can be installed in your switchboards and load centres.

These models:

- ➔ rated for 240vac use with 2 amp (IND) output relay (480watt fans)
- ➔ can monitor 10 amp circuits using their internal adjustable set point current sensors or via an external current sensor where you need to monitor higher current loads.
- ➔ Internal current sensor will turn on from .07 Amp (10 watt LED) to 3 amps.
- ➔ External current sensors can be any digital current sensor in the Senva range.
- ➔ some versions have included a 10 min adjustable run-on timer or a delay on/off timer that include external bypass switch terminals.

new product

ABC MODEL	DESCRIPTION
SW2 CA	2 mod, 240vac, output relay & adjustable current sensor, 10 Amp circuits
SW2 AA	2 mod, 240vac, output relay for external current sensor, Hi Amp circuits
SW3-CT	3 mod, 240vac, output relay, del off timer & adjustable current sensor, 10 Amp circuits
SW3-AT	3 mod, 240vac, output relay del off timer for external current sensor, Hi Amp circuits
SW3-AD	3 mod, 240vac, output relay, del on/off timer & adjustable current sensor, 10 Amp circuits

## Contact details

### General enquiries and technical information:

For more details and technical information on any of the products listed (including full AB Controls and Senva catalogues), please contact AB Controls.

phone: 0425 722525  
email: arthur@abcontrols.com.au



For other areas, contact AB Controls  
email: sales@abcontrols.com.au

For sales enquiries, please contact your local dealer as shown below.

### Distributors:

#### Victoria

NAW Controls



98 Commercial Drive  
Thomastown, 3074

tel: (03) 94646555

fax: (03) 94645155

email: sales@nawcontrols.com.au

web: www.nawcontrols.com.au



#### Sydney/Newcastle

Tobin Electrical Components

2C Brunker Road,  
Chullora 2190

tel: (02) 87135200

fax: (02) 97905211

email: sales@tobins.com.au

web: www.tobins.com.au



#### Queensland

Dore Electrics

20 Devlan Street,  
Mansfield 4122

tel: (07) 33495300

email: sales@doreelec.com.au

web: www.doreelec.com.au